

Innovation
for A Better Life

COSLINK ESS

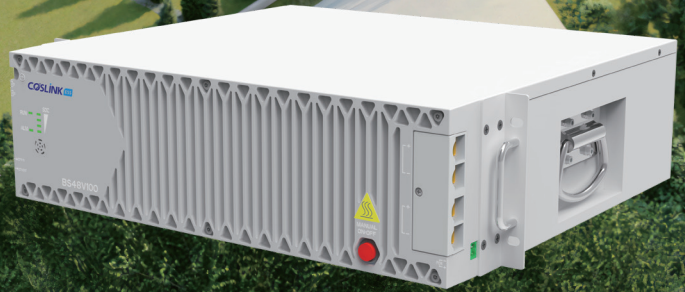
**CHANGE
YOUR ENERGY
PROVIDE
ENERGY
INDEPENDENCE**

EnerMax HEB Series

HEB48V100 Smart Li-ion Battery

www.coslinkess.com

Official Authorized ESS Integrator of CATL



Features and Advantages



Smarter

- Smart active control technology
- Intelligent charge & discharge control
- Integrated BMS and high active control optimizer



High performance

- Cycle life: **6000 times**
- Wide application temperature range
- Excellent current balancing performance
- Mixed use with lead-acid battery & conventional lithium batteries



Great safety

- Reliable LiFePO4 cells
- Multiple real-time warnings and protections



Compact and modular

- Standard 19" rack-mounted design (3U)
- Modular design



Certification compliant

- IEC62619, IEC62620, UN38.3, EN61000



Smart management

- Local & remote monitoring
- Advanced working modes: peak shaving mode, peak shifting mode, etc.
- Precise calibration of SOC and SOH

Leader of ESS Active Control Technology

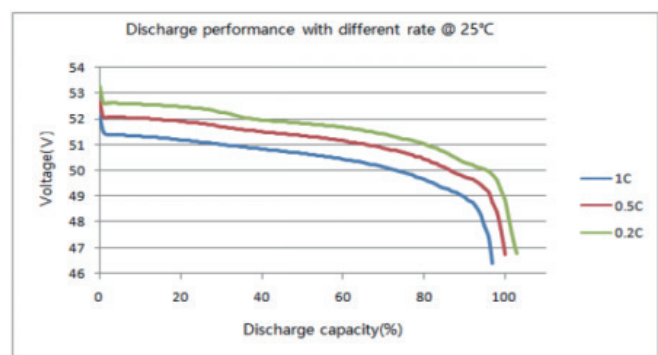
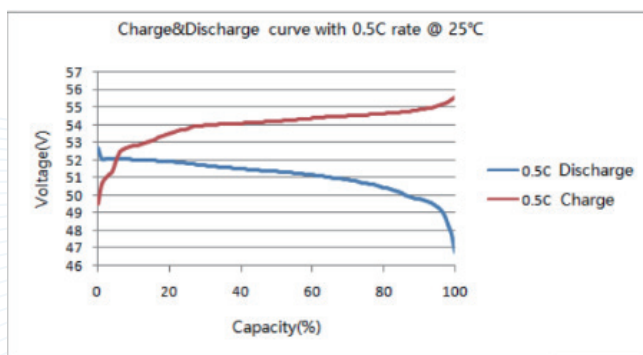
Provide Professional OEM/ODM Solution and Product



UN38.3

Model	HEB48V100
Battery Type	LFP
Rated Voltage [V]	48
Rated Capacity [Ah]	100Ah@48V, 0.5C, 25°C
Dimensions [W*D*H, mm]	442 * 400 * 130.5
Discharging Voltage Range [V]	42 ~ 58 (consistent voltage)
Output Power [W]	4800
Max. Continuous Discharging Current [A]	100
Weight [kg]	39
Cycle Life [Times]	6000 times (25°C, 0.5C, 80% DOD)
Communication	RS485 * 2, CAN * 2, and dry contact * 2
Parallel Connection	Up to 32 packs (CAN) / 16 packs (RS485)
Balance Method	Passive balancing
Equalizing Current [mA]	100
Heat Dissipation	Natural cooling
Working Temperature [°C]	Charging: 0 ~ 55; discharging: -20 ~ 55
Storage Temperature [°C]	-30 ~ 60
Relative Humidity	5% ~ 95% RH (non-condensing)
Protection and Alarm	Overheat, over-current, short circuit, over-charging, over-discharging, etc.
Designed Life Time	15 years
Working Methods	1. Battery characteristic discharge output mode 2. Peak shaving mode 3. Peak shifting mode
Anti-Theft	Gyroscope

Performance Curve



Note: The above information may subject to update without prior notice.

COSLINK DIGITAL ENERGY TECHNOLOGY CO., LTD.

- Room 2A of Building 2, Winlead Intelligent Park, Shutianpu Community, Matian Sub-District, Guangming District, Shenzhen City
- +86-0755-2969 1626 • sales@coslinkess.com